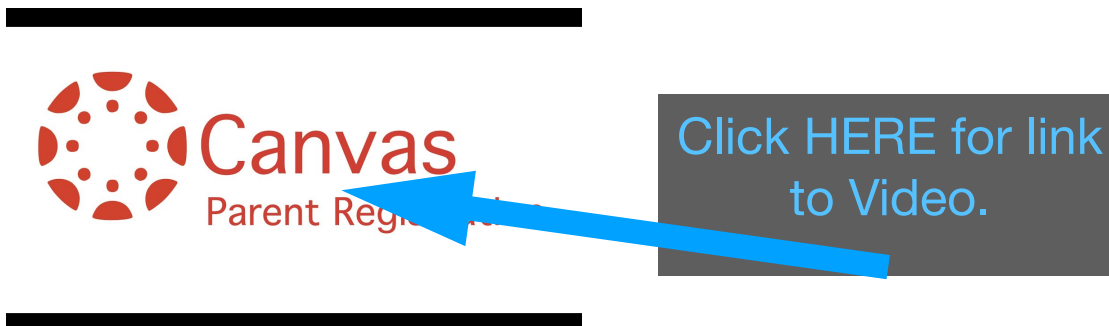


# Canvas: Parent / Observer Registration Guide

**Step #1** Watch the 1:08 min video - “Canvas: Parent / Observer Registration” -

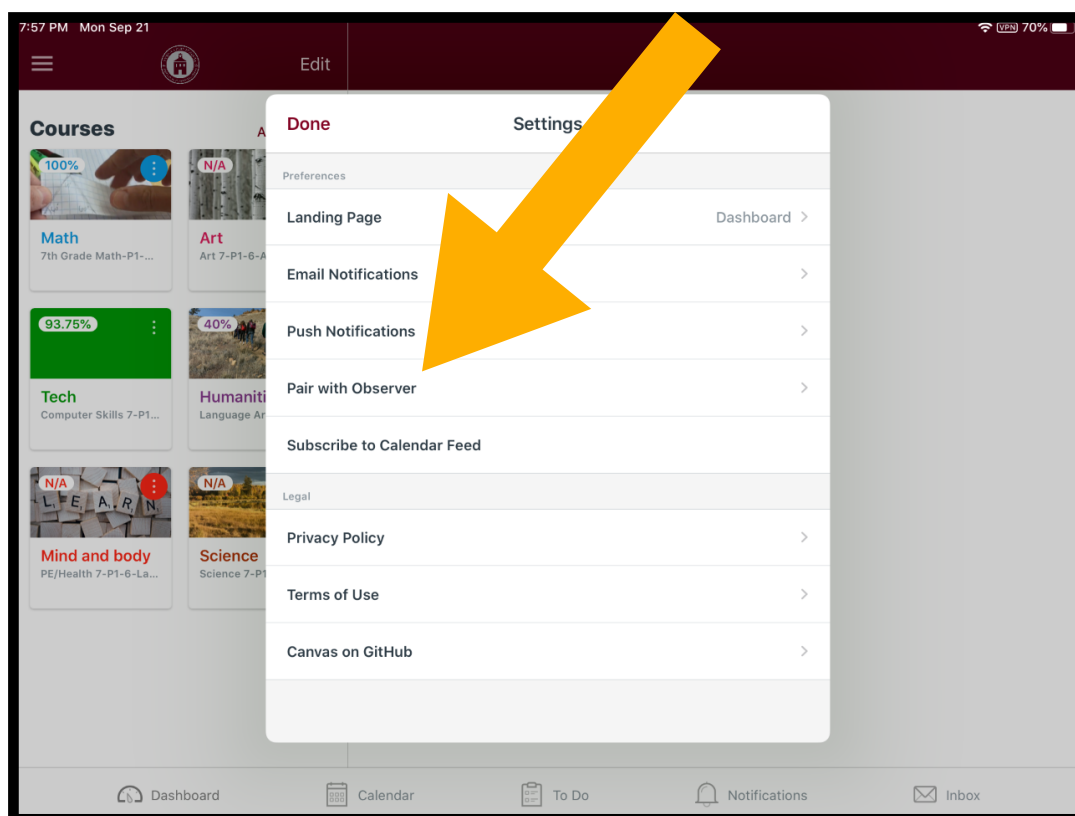


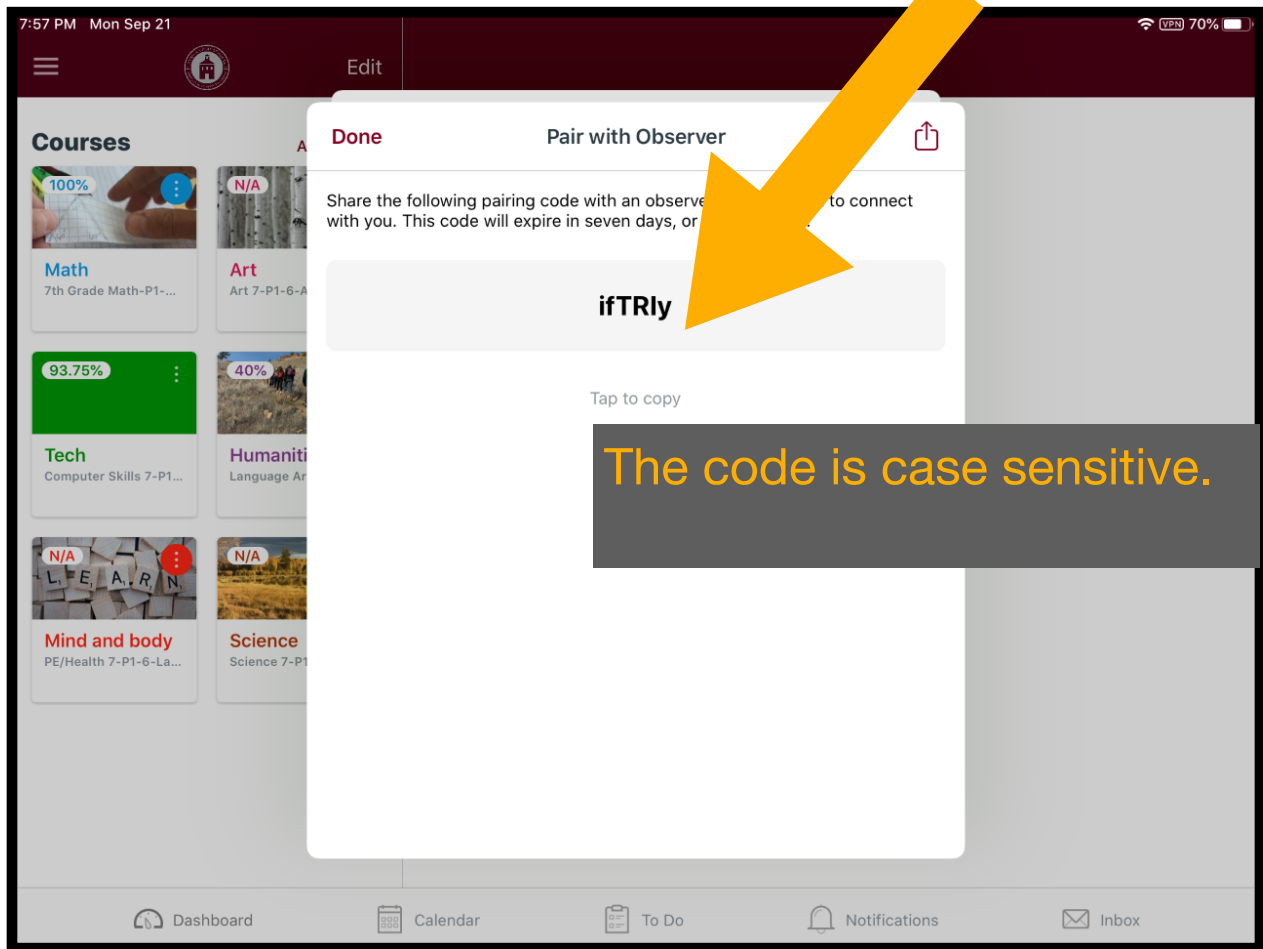
**Step #2** [bls.instructure.com/login/canvas](https://bls.instructure.com/login/canvas)

**Step #3** Click here for an account - pull down “Bend La Pine Schools”

**Step #4** Establish your username (email) and password

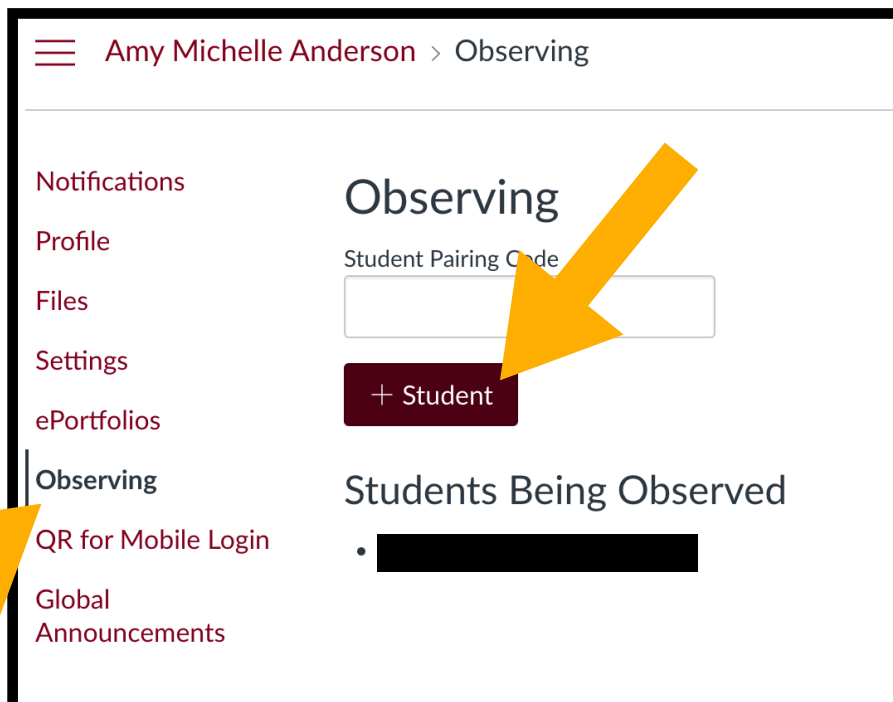
**Step #5** Your child will get a pairing code for you from their Canvas account by (1) opening up their Canvas account, (2) Settings, and (3) Pair with Observer





**Step #6** Your child will get a pairing code for you from their Canvas account by (1) opening up their Canvas account, (2) Settings, and (3) Pair with Observer

**Step #7** Use code to register as an “observer” of your student’s account [you can add multiple students to your account by clicking on “observing” in the menu, then “+student+- refer to video in step #1]



# Now that you are paired...What can you see?

- ~ Dashboard
- ~ Homepage
- ~ Calendar

- ~ Module
- ~ Assignment Information
- ~ Grades

Dashboard :: The “landing page” that allows you to see your student’s 6 classes

The dashboard features a dark red sidebar on the left with the following navigation options: Account, Dashboard, Courses, Calendar, Inbox, Studio, and Help. The main content area displays six course cards in a 2x3 grid. Each card includes a representative image, the course title, and the teacher's name. A yellow arrow points to the 'Dashboard' label above the grid, and another yellow arrow points to the 'Courses' option in the sidebar. A pink arrow points to the course name '7th Grade Math-P1-6-Biancucci' in the first card.

Dashboard

Account

Dashboard

Courses

Calendar

Inbox

Studio

Help

7th Grade Math-P1-6-Biancucci  
7th Grade Math-P1-6-Biancucci  
2020/2021 [S1] Realms Middle School  
Observing: Finneus Peterson

Art 7-P1-6-Alles  
Art 7-P1-6-Alles  
2020/2021 [S1] Realms Middle School  
Observing: Finneus Peterson

Computer Skills 7-P1-6-Zywicke  
Computer Skills 7-P1-6-Zywicke...  
2020/2021 [S1] Realms Middle School  
Observing: Finneus Peterson

Language Arts 7-P1-6-Rice  
Language Arts 7-P1-6-Rice  
2020/2021 [S1] Realms Middle School  
Observing: Finneus Peterson

PE/Health 7-P1-6-Lafrenz  
PE/Health 7-P1-6-Lafrenz  
2020/2021 [S1] Realms Middle School  
Observing: Finneus Peterson

Science 7-P1-6-Beck  
Science 7-P1-6-Beck  
2020/2021 [S1] Realms Middle School  
Observing: Finneus Peterson

Click on course name for info on an individual class.

Homepage :: Each class has a landing page with links and information to “modules” [there are multiple paths to get places], a class overview, and teacher’s WebEx link.

The course landing page for '7th Grade Math-P1-6-Biancucci' features a sidebar with links for Home, Announcements, Syllabus, Modules, Grades, Cisco WebEx, and For Students. The main content area has a red header for '7Z Mathematics' and includes instructions on how to use the 'Modules' link and the 'WebEx link'. Below this is a large image of mathematical formulas and a paragraph of course description.

2020/2021 [S1] Realms Middle School

Home

Announcements

Syllabus

Modules

Grades

Cisco WebEx

For Students

7th Grade Math-P1-6-Biancucci

7Z Mathematics

Use this [Modules link](#) to launch each day's lesson, find assignments and discussions, and see the flow of the class.

Use this [WebEx link](#) to go to Dante's room.


In this course we will cover topics in ratios and proportions, percentages, expressions and equations, probability and sampling, and angles and triangles. You will begin to model math algebraically and learn to solve equations with inverse operations.

You will explore and understand the meaning, application, and beauty of 7th-grade mathematics. We will apply our knowledge to real world contexts. Through this course, we hope you'll view the world differently.

If you are accessing this course from a mobile device, please review the following: [Mobile Guides - Canvas Student](#)

Calendar :: Allows you to see the assignments assigned from each class by month/week/ or agenda view. [2:21 minute Calendar Overview Video below]



 **CANVAS**  
Calendar Overview

Click [HERE](#) for link to Video.



Today ← → September 2020 Week **Month** Agenda +

SUN	MON	TUE	WED	THU	FRI	SAT
30	31	1	2	3	4	5
6	7	8 <a href="#">Exit Ticket</a>	9	10 <a href="#">4p M1L2: Self Evaluation on HOW Participation</a>	11 <a href="#">9a M1L3 CanvasAssignmentTurnInActivity</a> <a href="#">M1L1:Help me get to know you better!</a>	12
13	14	15	16	17	18	19
20	21 <a href="#">8:35a Individual Assignment: Centering with Circles</a> <a href="#">4p M2L1: Scaling Machines DEBRIEF</a> <a href="#">Fitness Log</a> <a href="#">M1L2: Assignment - Video Submission (Science 7-P1-6-Beck)</a> <a href="#">Respiratory System</a>	22 <a href="#">3:30p Individual Assignment: Hatching, Cross Hatching, and Stippling Adding Value with Applied Line (Sept. 21 &amp; 22)</a> <a href="#">3:30p Individual Assignment: Using Line Techniques to Apply Value to Transform a Shape into a Form</a>	23	24 <a href="#">8:59a M2L1 : Asynchronous Task (homework): Most important characteristic of life (Science 7-P1-6-Beck)</a>	25 <a href="#">Assignment #1: CDL Expectations Contract</a>	26
27	28 <a href="#">8a What is Value Video</a> <a href="#">9a Assignment #2: Profile and Calendar</a> <a href="#">9a Assignment #3: Practice a pdf Submission</a>	29 <a href="#">3:30p Assignment :Circling and Blending Technique (Sept. 22-25)</a>	30	1	2	3

Modules :: A “module” is a week at Realms.

M1L1 = module #1 (wk1), lesson #1

M1L3 = module #1 (wk1), lesson #3

☰ 7th Grade Math-P1-6-Biancucci > Modules

2020/2021 [S1] Realms Mid...

Home

Announcements

Syllabus

Modules

Grades

Cisco Webex

Formative

▼ Module 1: Getting to Know Desmos and Canvas

📄 M1L1: September 14: Getting to know Desmos and Canvas

📄 M1L2: September 17: Getting to Know You continued

📄 M1L2: Self Evaluation on HOW Participation  
Sep 17 | 6 pts

📄 M1L3: September 18: Getting to Know You 3

▼ Module 2: Scale Drawings

📄 Module 2 Learning Targets

📄 M2L1: September 21: Scaling Machines

📄 M2L1: Scaling Machines DEBRIEF  
Sep 21 | 6 pts

**Assignment Alert!**  
The indentation indicates an assignment for this week.

# Assignment Information

[Home](#)

[Announcements](#)

[Syllabus](#)

[Modules](#)

[Grades](#)


[Cisco Webex](#)

Click on assignment name for instructions and [rubric] for assignments.

▼ **Module 1: Getting to Know Desmos and Canvas**

 **M1L1: September 14: Getting to know Desmos and Canvas**

 **M1L2: September 17: Getting to Know You continued**

 **M1L2: Self Evaluation on HOW Participation**  
Sep 17 | 6 pts

 **M1L3: September 18: Getting to Know You 3**

## M1L2: Self Evaluation on HOW Participation

**Due** Sep 17 by 4pm    **Points** 6    **Submitting** a text entry box

AFTER the class had ended, submit a text response explaining your level or performance today on HOW Participation.

Include evidence to justify your score.

### HOW Participation Day 1

Criteria	Ratings				Pts
<b>HOW Participation</b> I show good attending skills to participate fully in whole class, group/partner, and private work time. I respond to questions appropriately, share my ideas, listen to others, and compromise.	<b>6.0 pts</b> <b>Mastery/High Proficiency</b> Student completed all screens with high quality work. Student was genuine, thoughtful, and kind in responding to questions, sharing their ideas, listening to others and compromising.	<b>4.0 pts</b> <b>Proficient</b> Student completed all screens to proficiency. Student was appropriate in responding to questions, sharing their ideas, listening to others and compromising.	<b>3.0 pts</b> <b>Developing -</b> Student completed most screens to proficiency. Student required reminders in responding to questions, sharing their ideas, listening to others, and compromising.	<b>1.0 pts</b> <b>Not yet</b> There is little evidence of student completing screens to proficiency. Student demonstrated significant challenges in responding to questions, sharing their ideas, listening to others, and compromising.	6.0 pts
<b>Total Points: 6.0</b>					

# Did my child turn in the assignment?

Grades :: Click on “Grades” to see if the assignment was turned in. There are a few different codes that could pop up here, all indicating the assignment was turned in, but may not indicate the quality of the work.

2020/2021 [51] Realms Mid... Print Grades

Home  
Announcements  
Syllabus  
Modules  
**Grades**  
Cisco Webex  
Formative

Grades [Redacted]

Course: 7th Grade Math-P1-f Arrange By: Due Date Apply

Name	Due	Status	Score	Out of
M1L2: Self Evaluation on HOW Participation	Sep 17 by 4pm		6	6
M2L1: Scaling Machines DEBRIEF	Sep 21 by 4pm		-	6
Assignments			100%	6.00 / 6.00

This symbol indicates an assignment was turned in. It may not be graded [at this time] or it is an assignment that the teacher did not assigned a point value.

Name	Due	Status	Score	Out of
M1L3 CanvasAssignmentTurnInActivity	Sep 18 by 9am		0	0
M1L1 WebEx Contract			0	0
M1L3 - Canvas Quiz				

M1L1 WebEx Contract

Comments

Yahooooo! You did it! Nice work!! Laurie Rice, Sep 18 at 12:55pm

This symbol indicates the teacher has provided a comment on the assignment. Click to see comment.